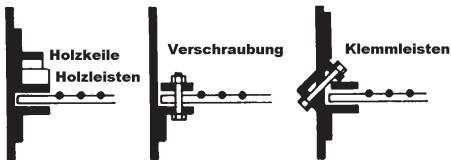


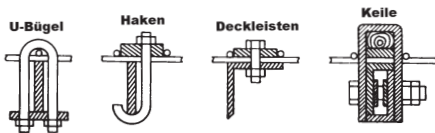
Notice

Grid screens | PS-Grid

Edge fastening



Center fastening

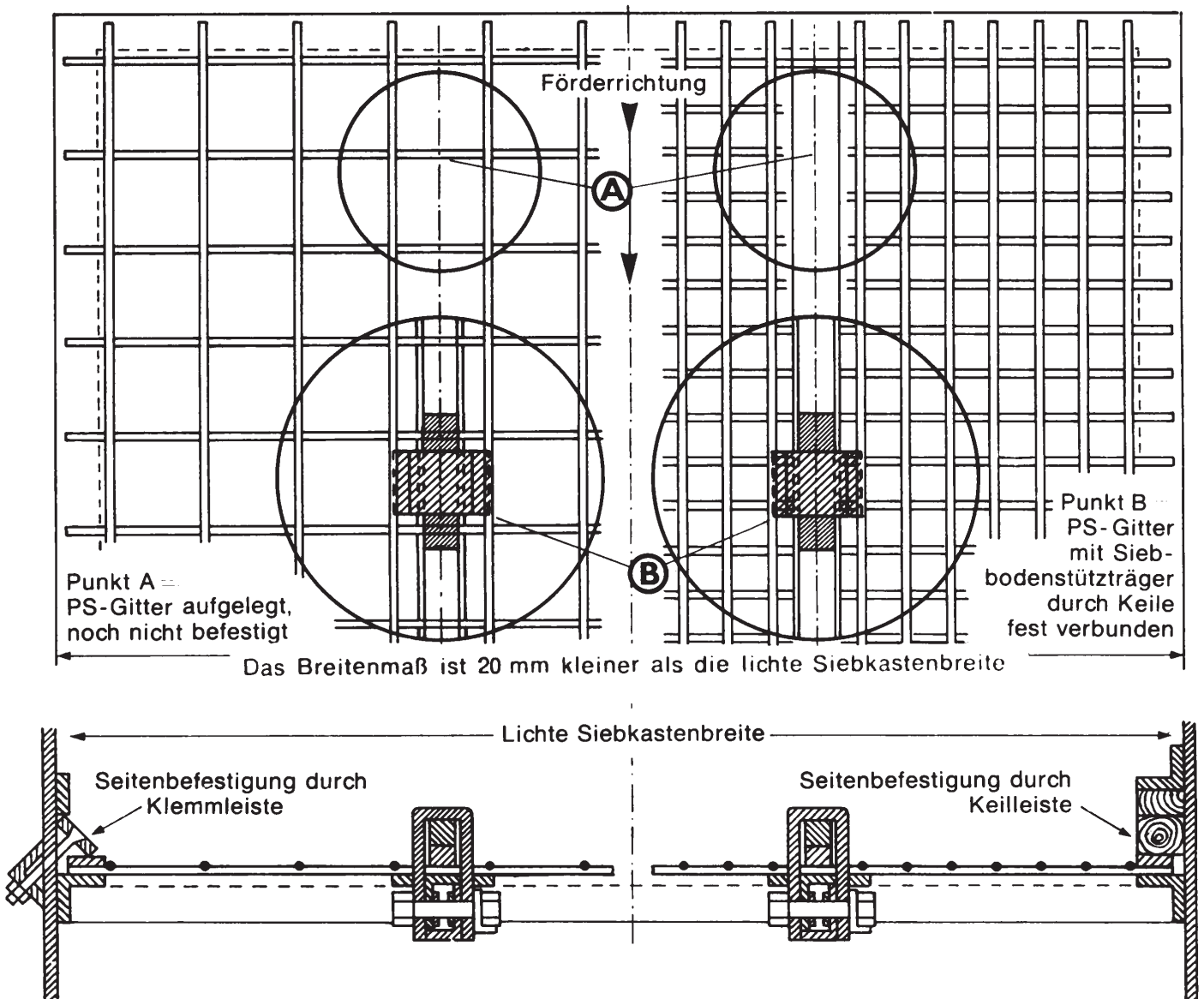


1. The use of PS-Grid screens on screening machines requires a good edge and center fastening with the purpose of firmly connecting the screen and the supporting beam of the screening machine frame.
When PS-Grid screens are installed for the first time and the method of fastening is not known, we recommend that you contact us.
 2. If the screening machine has a tensioning device, PS-Grid screens with hook screens - welded hook screens with wire thickness starting from 8 mm Ø - can be supplied.
 3. The tensioning rails or tensioning hooks must fully engage in the clamping folds of the sieve tray.
 4. Always pre-tension the screen evenly from the center of the fold to the right and left; only then tension it so tightly that the screen rests fully and firmly on all supports.
- It should be noted that only the thinner wires absorb the tensioning loads. With thick wires, the tensioners serve as a kind of clamping device. Additional center fasteners are recommended.
5. In the case of longitudinal and cross tensioning machines, the side wedging or center fastening should only be done after the screen bottom has been correctly tensioned.
 6. Rounded screens, and multiple segments, are available for screening and washing drums, from 500 mm diameter up to 2000 mm length.

Unless otherwise specified, the axial wires are on the outside, so the inner wires are placed in the direction of the drum circumference.

Notice Grid screens | PS-Grid

Fastening examples for plane screen decks



Prellerstraße 5 • 44141 Dortmund • Germany

Phone +49 (0) 231-927398-0
Fax +49 (0) 231-927398-20

E-Mail verkauf@curt-ebert-siebtechnik.de
Website www.curt-ebert-siebtechnik.de